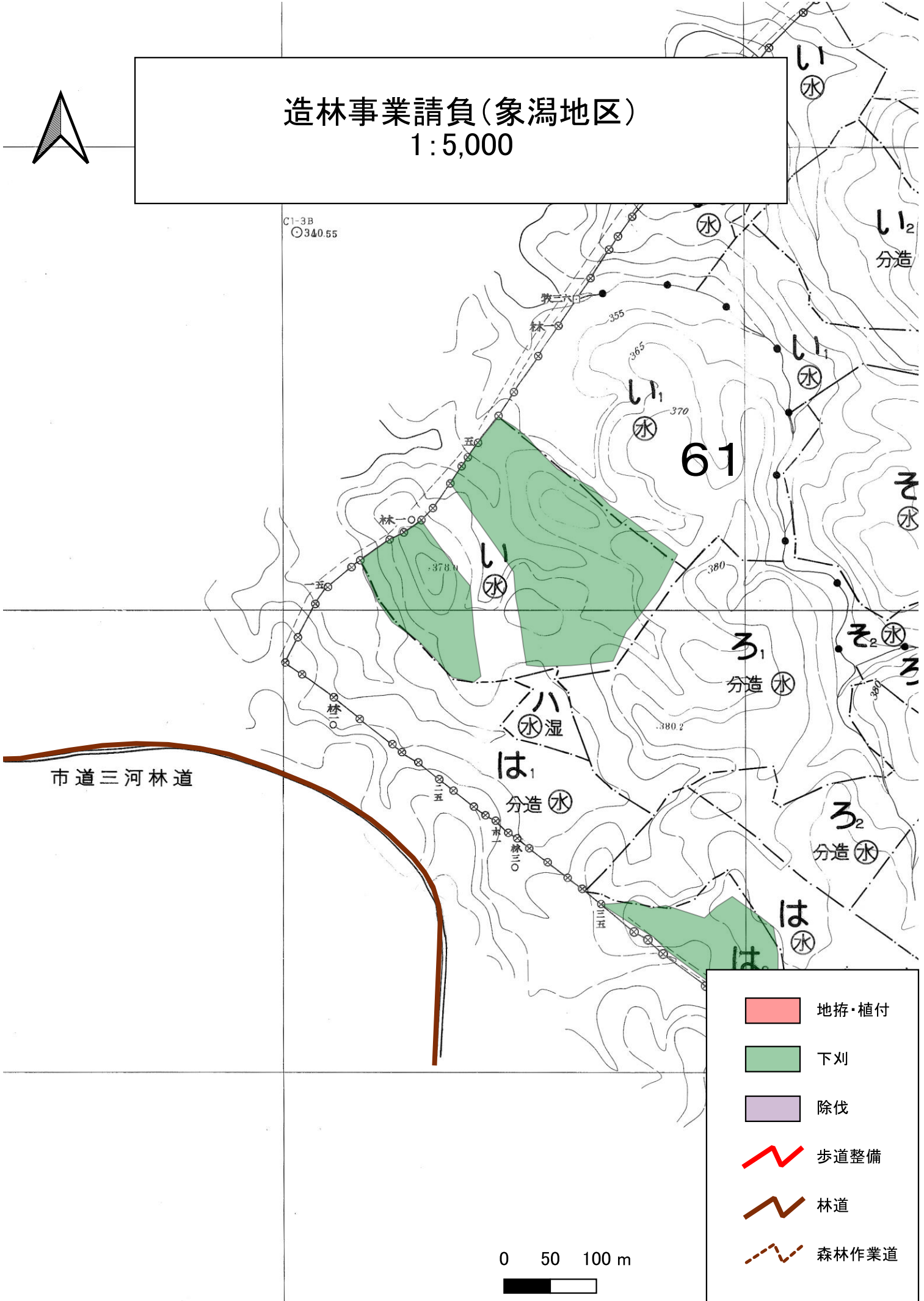


# 造林事業請負(象潟地区)

1:5,000

C1-3B  
○340.55

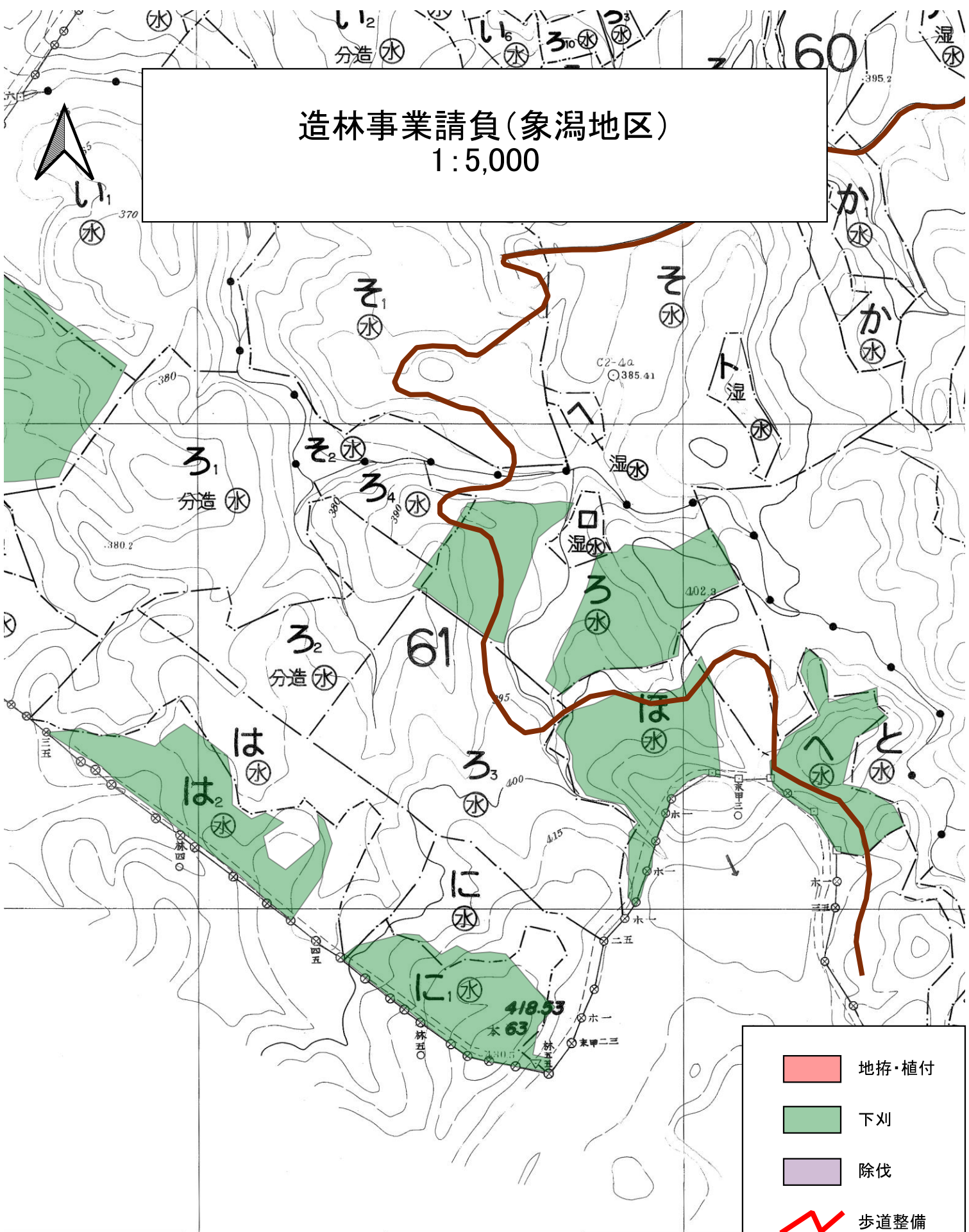








- 地拵・植付
- 下刈
- 除伐
- 歩道整備
- 林道
- 森林作業道

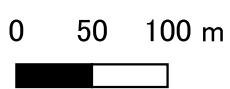
0 50 100 m



# 造林事業請負(象潟地区) 1:5,000



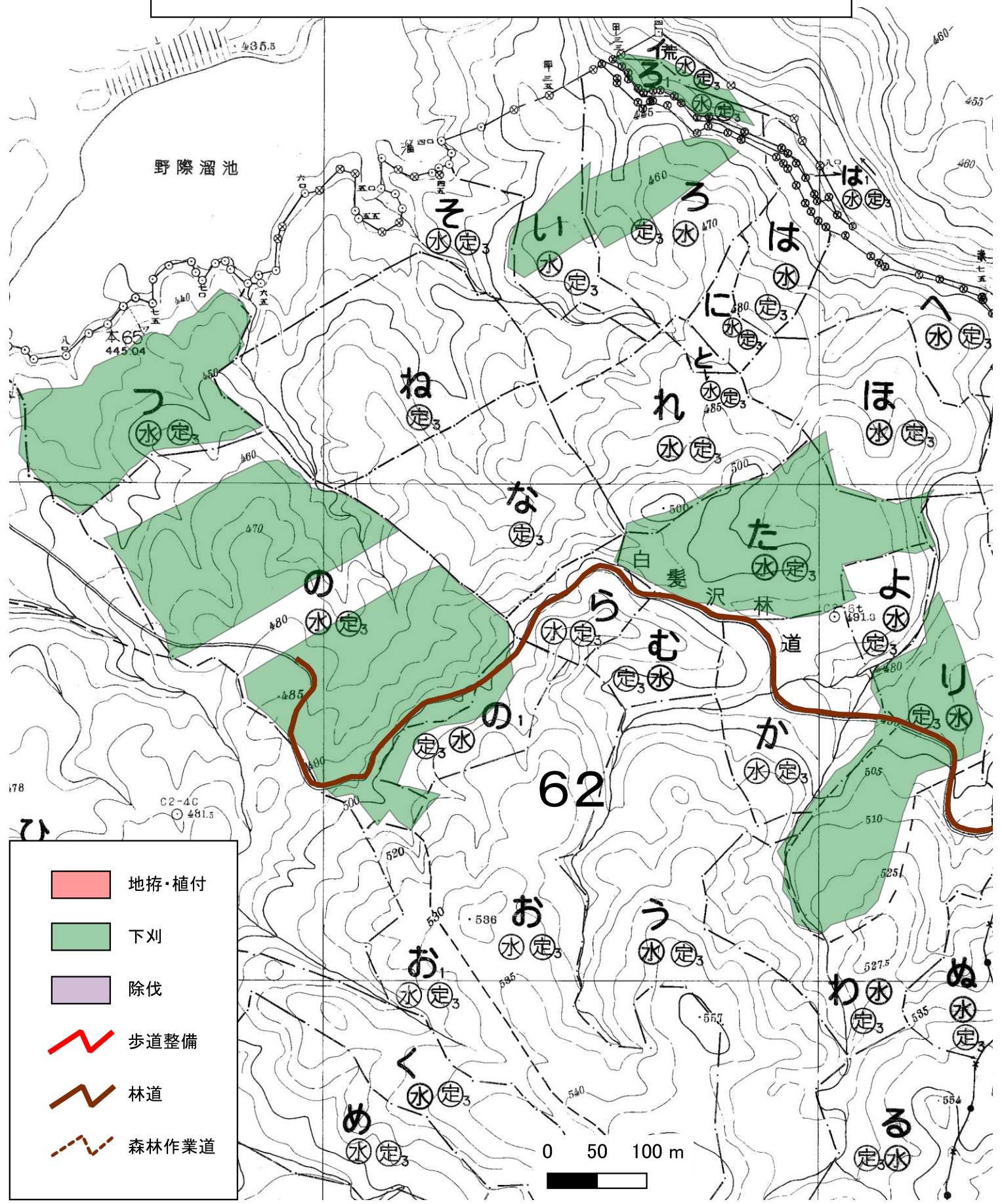
|   |       |
|---|-------|
|  | 地拵・植付 |
|  | 下刈    |
|  | 除伐    |
|  | 歩道整備  |
|  | 林道    |
|  | 森林作業道 |









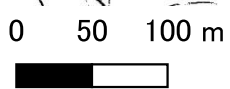


# 造林事業請負(象潟地区)

1:5,000



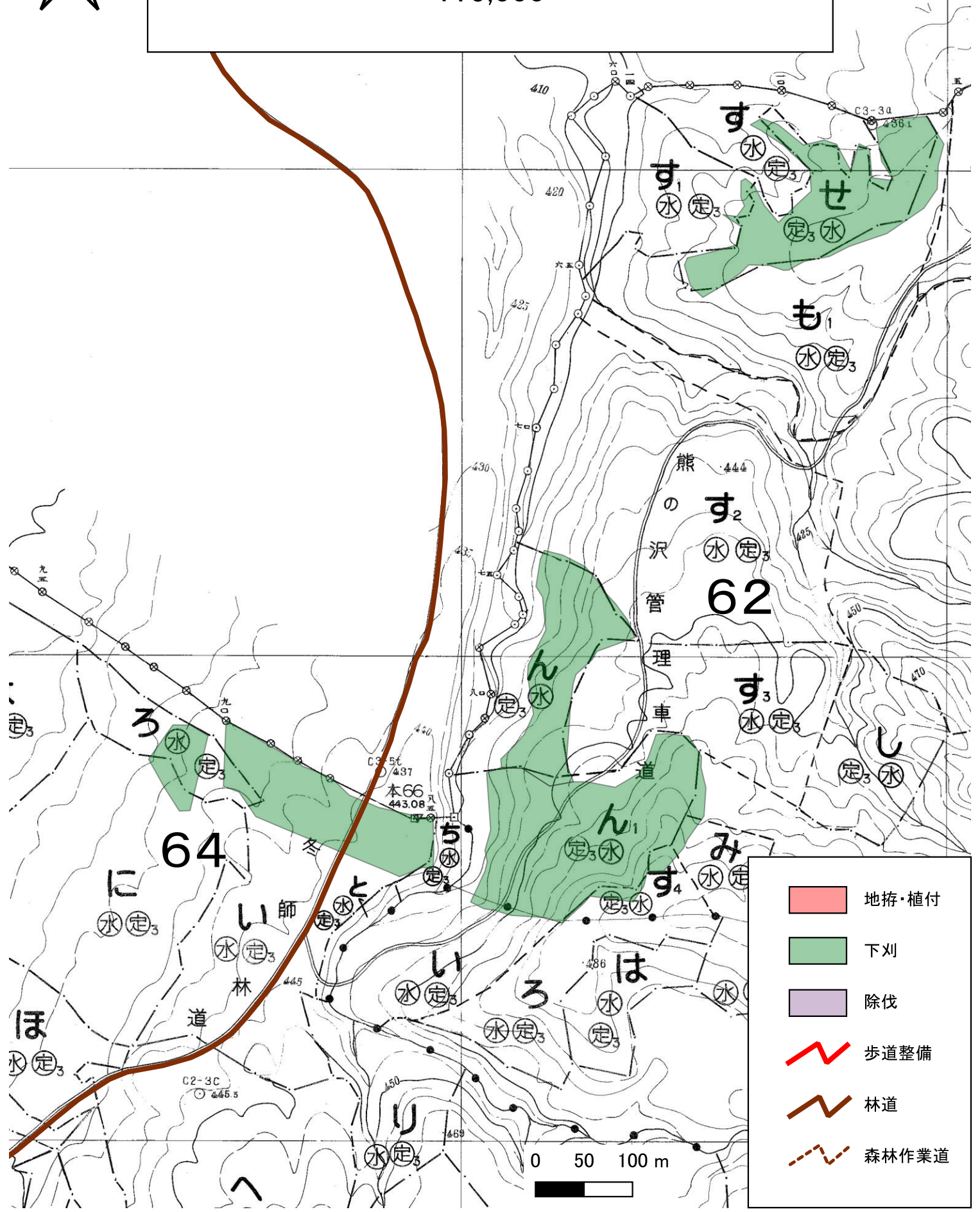
|   |       |
|---|-------|
|  | 地拵・植付 |
|  | 下刈    |
|  | 除伐    |
|  | 歩道整備  |
|  | 林道    |
|  | 森林作業道 |









至冬師



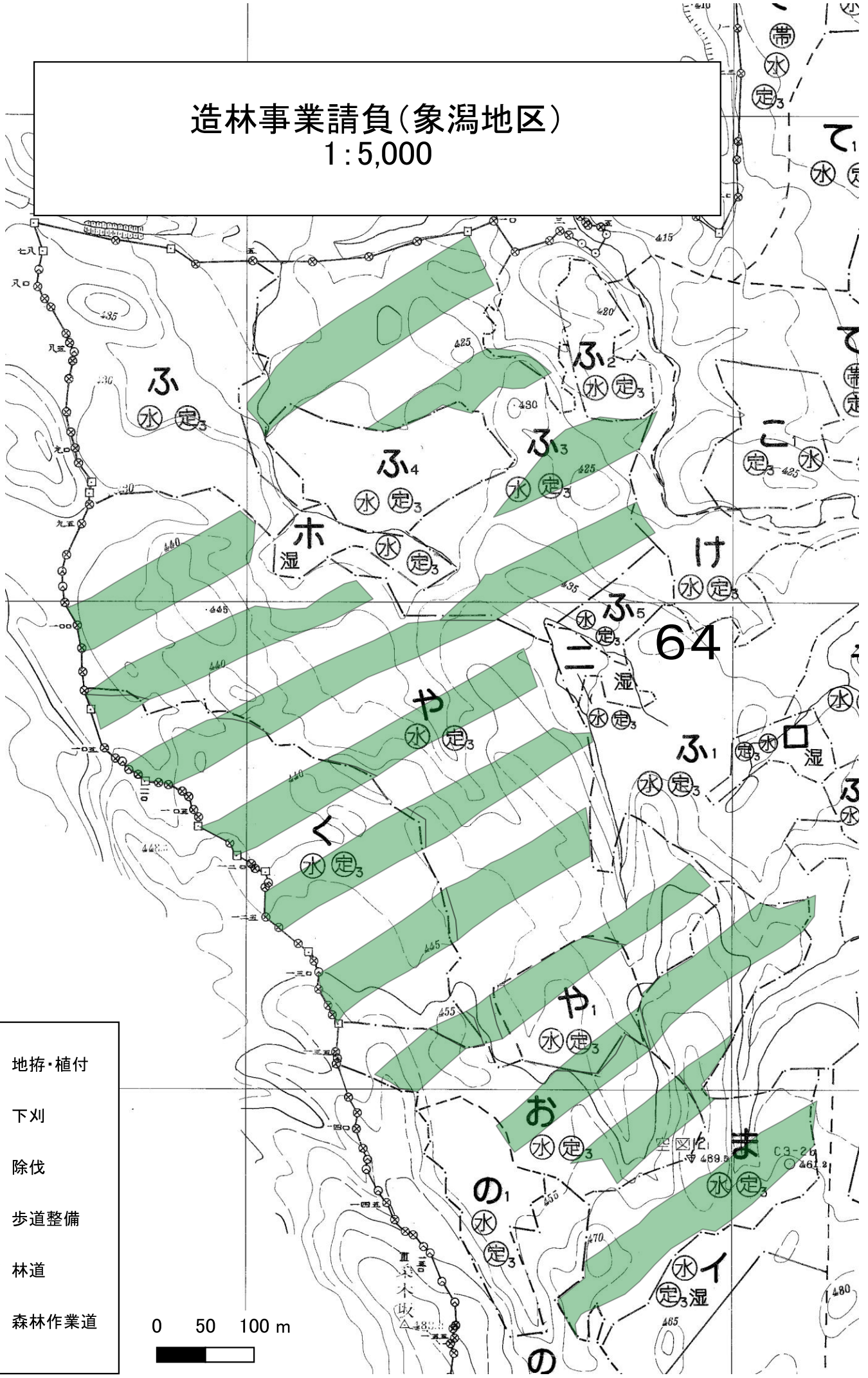
# 造林事業請負(象潟地区) 1:5,000









-  地拵・植付
-  下刈
-  除伐
-  歩道整備
-  林道
-  森林作業道

# 造林事業請負(象潟地区)

## 1:5,000



|   |       |
|---|-------|
|  | 地拵・植付 |
|  | 下刈    |
|  | 除伐    |
|  | 歩道整備  |
|  | 林道    |
|  | 森林作業道 |

