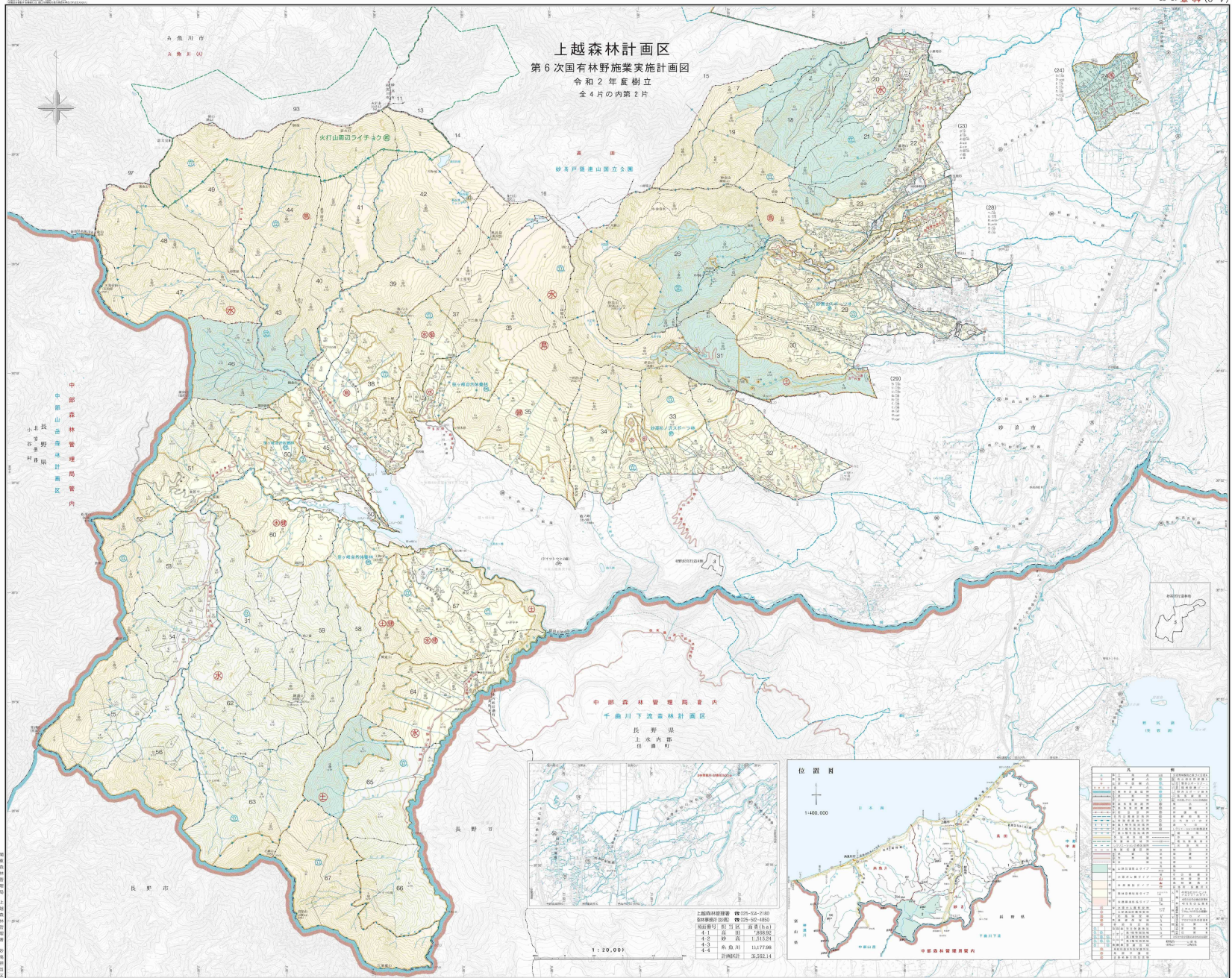
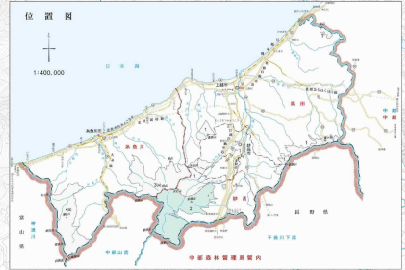
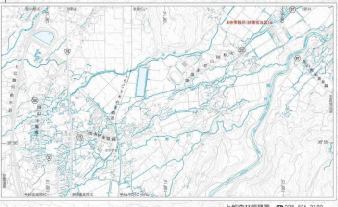


上越森林計画区 第6次国有林野施業実施計画図 令和2年度樹立 全4片の内第2片



中部森林管理局管内
小長野森林管理計画区

中部森林管理局管内
千曲川下流森林計画区
長野県
上水内郡
信濃町



大 小 積	
計	17,123.00
1	1,123.00
2	1,123.00
3	1,123.00
4	1,123.00
5	1,123.00
6	1,123.00
7	1,123.00
8	1,123.00
9	1,123.00
10	1,123.00
11	1,123.00
12	1,123.00
13	1,123.00
14	1,123.00
15	1,123.00
16	1,123.00
17	1,123.00
18	1,123.00
19	1,123.00
20	1,123.00
21	1,123.00
22	1,123.00
23	1,123.00
24	1,123.00
25	1,123.00
26	1,123.00
27	1,123.00
28	1,123.00
29	1,123.00
30	1,123.00
31	1,123.00
32	1,123.00
33	1,123.00
34	1,123.00
35	1,123.00
36	1,123.00
37	1,123.00
38	1,123.00
39	1,123.00
40	1,123.00
41	1,123.00
42	1,123.00
43	1,123.00
44	1,123.00
45	1,123.00
46	1,123.00
47	1,123.00
48	1,123.00
49	1,123.00
50	1,123.00
51	1,123.00
52	1,123.00
53	1,123.00
54	1,123.00
55	1,123.00
56	1,123.00
57	1,123.00
58	1,123.00
59	1,123.00
60	1,123.00
61	1,123.00
62	1,123.00
63	1,123.00
64	1,123.00
65	1,123.00
66	1,123.00
67	1,123.00
68	1,123.00
69	1,123.00
70	1,123.00
71	1,123.00
72	1,123.00
73	1,123.00
74	1,123.00
75	1,123.00
76	1,123.00
77	1,123.00
78	1,123.00
79	1,123.00
80	1,123.00
81	1,123.00
82	1,123.00
83	1,123.00
84	1,123.00
85	1,123.00
86	1,123.00
87	1,123.00
88	1,123.00
89	1,123.00
90	1,123.00
91	1,123.00
92	1,123.00
93	1,123.00
94	1,123.00
95	1,123.00
96	1,123.00
97	1,123.00
98	1,123.00
99	1,123.00
100	1,123.00