

現場漫画

林業よ ススメ!

作：平田美紗子 題字：上野絢子



発行：林野庁

高性能林業機械

High-Performance Forestry Machine

ブロセッサ

Tree Processor

Tree processor is a specialized heavy machine to seamlessly conduct forestry operations from delimiting, cut logs to specified length, to piling up the logs.

High-Performance Forestry Machine refers heavy machines used in forestry operations recently.

High-Performance Forestry Machine provides great improvements in terms of performance efficiency and physical strain on workers, compared to conventional machines such as chainsaw and weeding machine.

Delimiting

Tree branches, conventionally cut off one-by-one by chainsaw, are now removed from the tree quickly by pulling the stem through a roller.

The removed branches piled up in one place are available for various applications.

Positioning of a tree processor hold the key to harvesting

Cross Cutting (Bucking)

The process to measure length and cut a timber. The timber is held at straight angle to check the shape.

An operator judges quality and shape of the timber to promptly determine the length and diameter of the logs according to the priority of the final wood product.

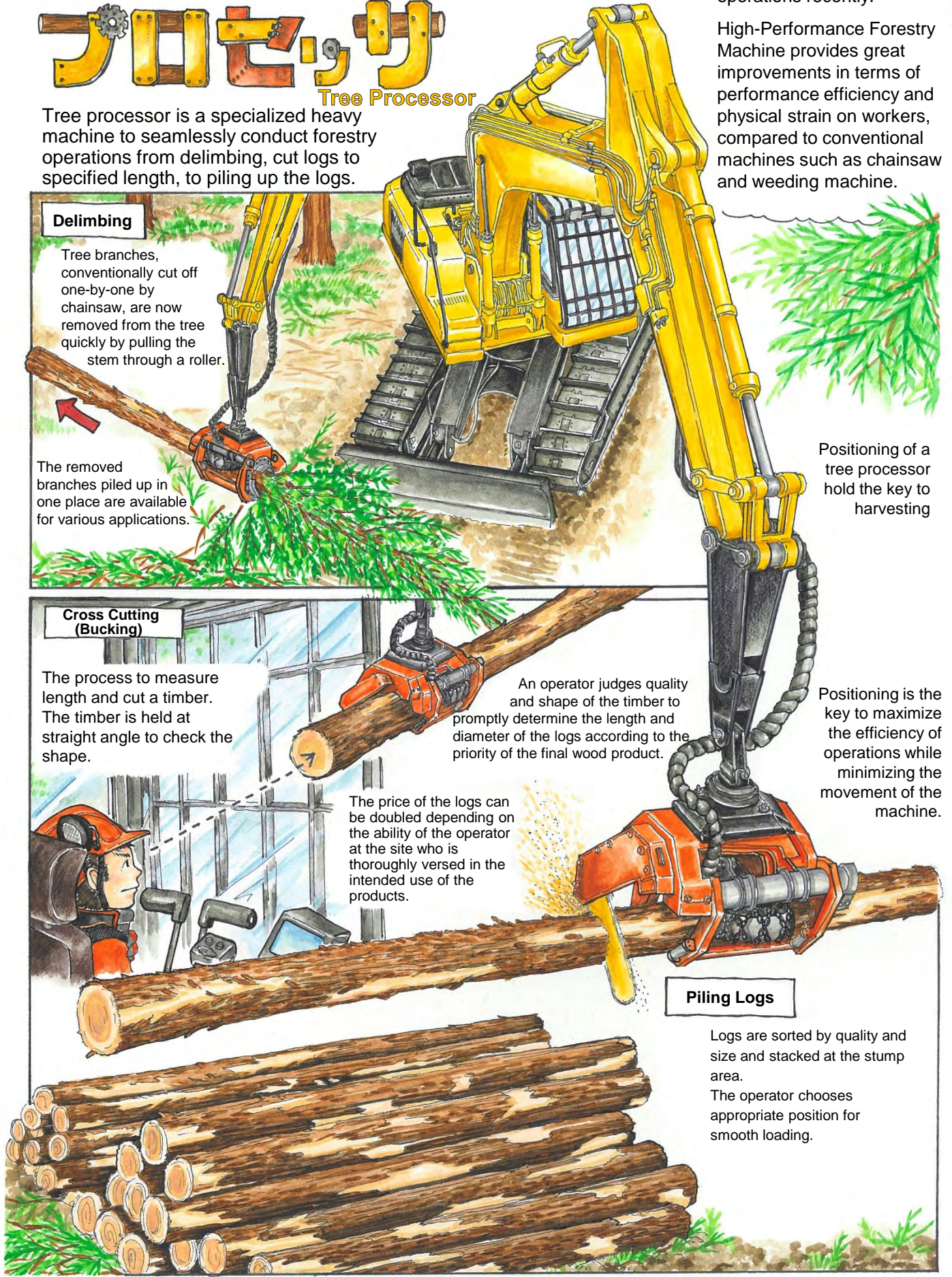
The price of the logs can be doubled depending on the ability of the operator at the site who is thoroughly versed in the intended use of the products.

Positioning is the key to maximize the efficiency of operations while minimizing the movement of the machine.

Piling Logs

Logs are sorted by quality and size and stacked at the stump area.

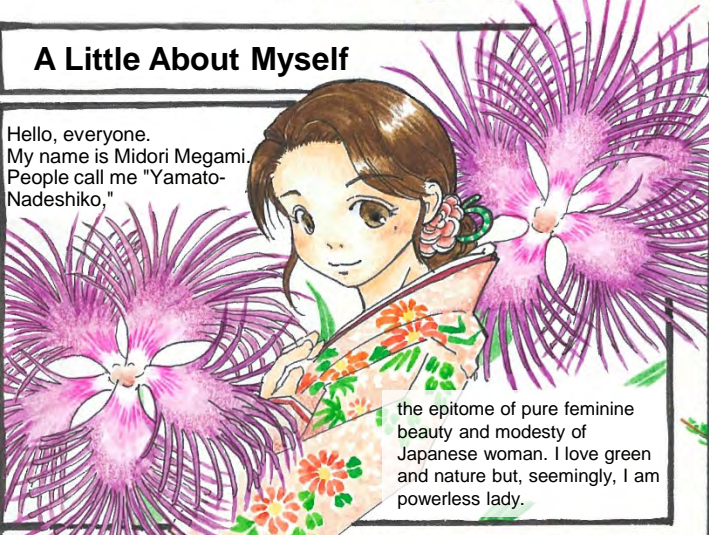
The operator chooses appropriate position for smooth loading.



女神のコウリン

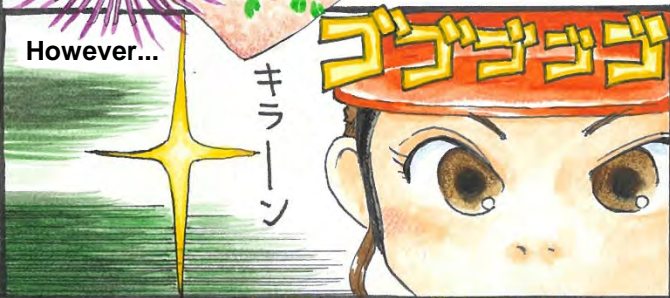
A Little About Myself

Hello, everyone.
My name is Midori Megami.
People call me "Yamato-Nadeshiko."

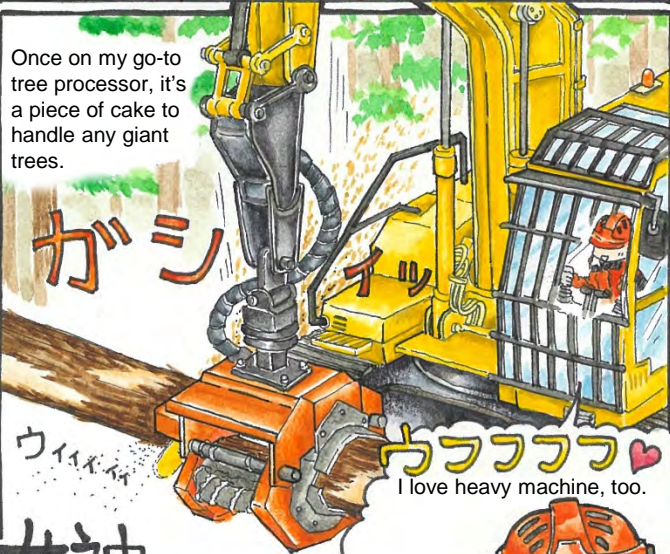


the epitome of pure feminine beauty and modesty of Japanese woman. I love green and nature but, seemingly, I am powerless lady.

However...



Once on my go-to tree processor, it's a piece of cake to handle any giant trees.



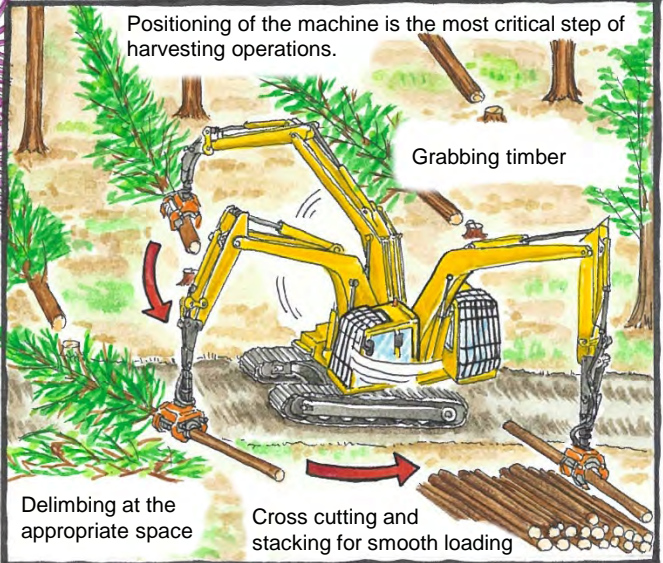
女神の(運転する)
コウ(性能)
リン(業機械)

Today is another nice day to work on safety-first policy.



You may think that forestry is full of heavy physical labors, such as tree felling, delimiting, cross cutting, and log hauling. However, thanks to introduction of high-performance forestry machine, opportunities women can work have been increasing.

Tree Processor



Positioning of the machine is the most critical step of harvesting operations.

Grabbing timber

Delimiting at the appropriate space

Cross cutting and stacking for smooth loading



Midori-san, your operation site is always so neat.

'cause I do train myself at home every day.

Training? At home?



Positioning oneself is also important for kitchen work.

Frying

Cutting

Washing

Serving

Round and round...

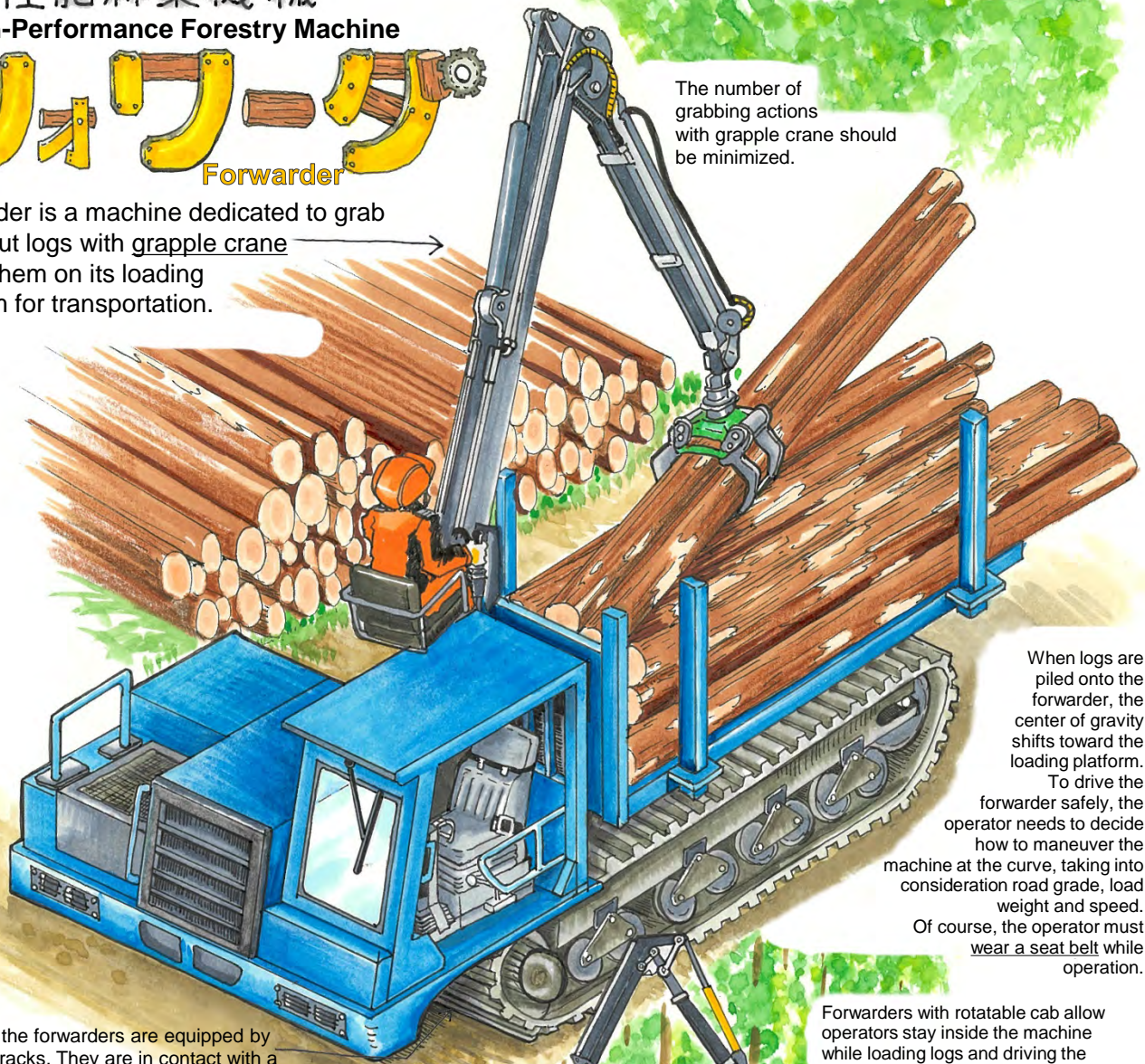
Midori in imagery rehearsal for improving performance without moving around

高性能林業機械 High-Performance Forestry Machine

フォワーダ Forwarder

Forwarder is a machine dedicated to grab cross-cut logs with grapple crane to pile them on its loading platform for transportation.

The number of grabbing actions with grapple crane should be minimized.



When logs are piled onto the forwarder, the center of gravity shifts toward the loading platform. To drive the forwarder safely, the operator needs to decide how to maneuver the machine at the curve, taking into consideration road grade, load weight and speed. Of course, the operator must wear a seat belt while operation.

Most of the forwarders are equipped by rubber tracks. They are in contact with a larger surface area and can run on rough roads stably.

Forwarders with rotatable cab allow operators stay inside the machine while loading logs and driving the machine.

Air conditioning in the driving cab makes works easy under any weather conditions.

Some forwarders use wheels instead of tracks.

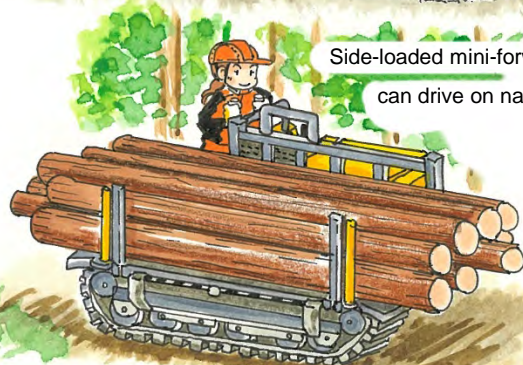


Recently, horse logging is receiving attention again from standpoints of culture and environment.



Horses can haul logs without established roads.

Side-loaded mini-forwarders can drive on narrow roads.



女神のコンクリン



女神の(運転する)
高(性能)
林(業機械)

Words on a Forwarder

Listen.
Treat them
very gently
and touch
softly.



I see. Very
gentle and soft.



Hey, hey!

You should be very
gentle when
grabbing logs with
grapple!
Don't adjust
gripping more than
necessary!



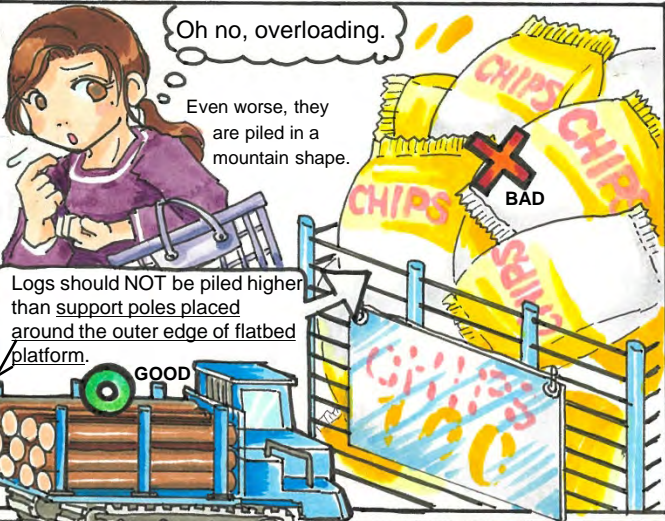
I wish she
were gentle
with me, too.

Midori loves timber so much that
she is tough on her novice colleague

Safety Guidance

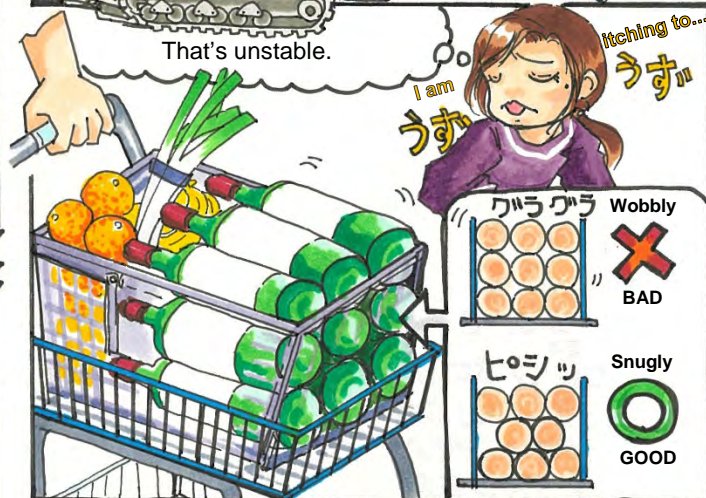
Oh no, overloading.

Even worse, they
are piled in a
mountain shape.



Logs should NOT be piled higher
than support poles placed
around the outer edge of flatbed
platform.

That's unstable.



Itching to...

I am
うす

Wobbly

BAD

Snugly

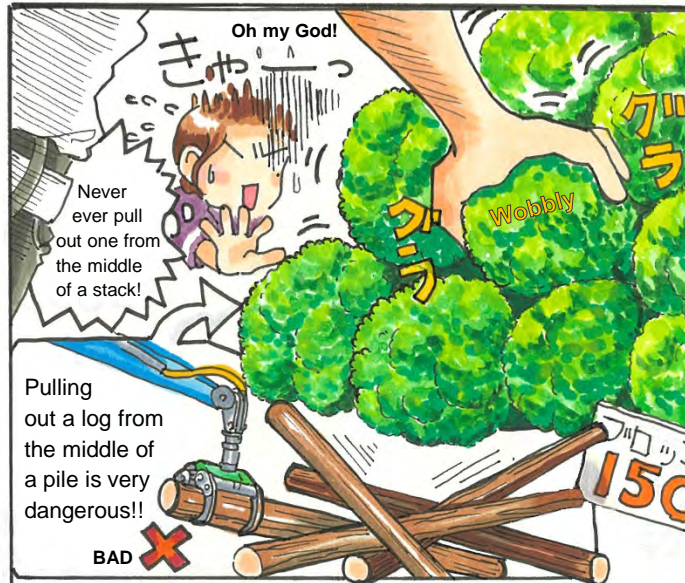
GOOD

Oh my God!

Never
ever pull
out one from
the middle
of a stack!

Pulling
out a log from
the middle of
a pile is very
dangerous!!

BAD



Midori who can't help but feel like to provide
safety guidance even at a grocery store

Comic About
Forestry Operations

Forward March, Forestry!



作：平田美紗子 題字：上野絢子

Creator: Misako Hirata

Cover Title (calligraphy): Ayako Ueno

翻訳協力：JICA北海道

Translated by JICA HOKKAIDO

Published by the Forestry
Agency of Japan

The Forestry Agency of Japan has published various cartoon and illustrations to attract attention on forests, forestry, and the lumber industry from a wide range of people.

In this cartoon, we introduce real aspects of Japanese forestry operations, something not likely to be seen in daily life. We hope you enjoy this cartoon and support forestry and forest conservations in Japan.



↑ For other comic series, please check the website of the Forestry Agency of Japan. (Japanese Version)