



JAPAN WOOD DESIGN AWARD 2021

Cutting-edge Wood Products in Japan

About “ Japan Wood Design Award”

The “ Wood Design Award” acknowledges outstanding wood products and related activities which contribute to the promotion of comfortable life, human health, and social prosperity from the perspective of consumers.

Overview of Wood Design Award 2021

- Management Body :
Wood Design Award Steering Committee
(Universal Design Intelligence., Inc.)
- Program supported by Forestry Agency
- Application Period : June 21 - July 30, 2021
- Works and activities eligible for application :

Architecture, Space, Building Material	Retail stores, public institutions / facilities, offices, houses, and building materials
Wood Products	Furniture, interior goods, tableware and kitchenware, daily goods, stationaries, and toys
Communication	Workshops, promotional activities, capacity building, business model
Technology and Research	Technology, research and development, and trial work

- Award Categories:

Lifestyle Design : Promote the quality of life through wood use

Construction, space, wood products, projects, communication, or technology and research which improve the functionality or convenience by wood use, explore the new domain of wood use, or propose better life with wood use to consumers.

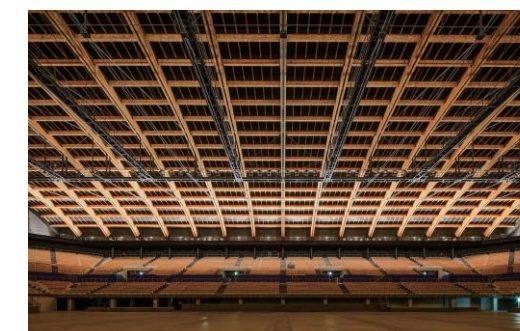
Health Care Design : Improve mental and physical well- being through wood use

Construction, space, wood products, projects, communication, or technology and research which appeal to human senses, provide relaxation, improve mental and physical health, or communicate background stories of producers through wood use.

Social Design : Revitalize forestry and community through wood use

Construction, space, wood products, projects, communication, or technology and research which contribute to the revitalization of forestry and community, develop sustainable systems of wood use, advocate the importance of wood use, or develop human resources.

- Number of entries : 433
- Number of award winner : 191



BEST AWARD (Minister of Agriculture, Forestry and Fisheries Award)

Prefectures in parentheses indicate locations of buildings or activities, when applicable. Otherwise, locations of awarded organizations.



Social Design Category: Architecture & Space Segment

URASHIMA VILLAGE(Kagawa)

Kanamaru Corporation (Kagawa), Setouchi Village Corporation (Kagawa)

This is a single lodging facility with a total of three buildings where the mountains of Sanuki and the Seto Inland Sea coexist. Designed to take advantage of the unique and spectacular view, guests can enjoy the Seto Inland Sea view from anywhere in the facility. The use of local timber throughout the facility has revitalized both the users and the local community. This is an accommodation facility that makes the most of local resources and culture through the collaboration of 11 local businesses. It is an outstanding work in every respect, including the participation of diverse stakeholders, linkage with tourism and workcations, and consideration for the environment, and is worthy of the Grand Prize. The effective use of the turtle shell design associated with the legend of Urashima in various parts of the facility and the incorporation of the culture of burnt cedar, which has been used in the Seto Inland Sea area since ancient times, make this work both appealing and narrative in the memories of those who visit here.



EXCELLENCE AWARD (Forestry Agency Director-General Award)



Lifestyle Design Category: Architecture & Space Segment

Takuma Building New Annex

Takuma Co.,Ltd(Hyogo), Takenaka Corporation (Osaka), Meiken Kogyo Co.,Ltd(Okayama), Strog Co.,Ltd(Toyama)

This is the headquarters training and office building of a boiler and plant manufacturer. Its design "shows" wood construction and wood quality of the pioneering office that "shows" the wood design from the inside and outside and it is a soft and sophisticated architecture that brings warmth from the inside by giving the impression of wood as a structural element. It is also highly evaluated for its pursuit of comfort for workers in terms of being surrounded by trees and taking in light and wind.



Lifestyle Design Category: Architecture & Space Segment

TRIAXIS Suma Beach

ICADA(Tokyo), linkworks Co.,Ltd(Hyogo), Kurodo Construction V (Osaka), Mika Araki (Hyogo)

The concept of this project was "a beach house to enjoy with children," and it was highly evaluated for its ambitious attempt to promote the advantages of wooden architecture for a temporary medium-scale facility such as a beach house. The panels used for the roof are made of lumber that is stripped from the CLT manufacturing process, which gives the building a light, natural feel. It is expected to serve as a high-quality role model for sea resort architecture in the region.



Lifestyle Design Category: Wood Products Segment

Wooden Frozen Rice Container "COBITSU"

Ohashi Ryoki (Gifu), Hideya Minamiji (Chiba)

When rice is frozen in COBITSU and heated in a microwave oven, the frozen rice tastes as good as if it were freshly cooked. This is a truly lifestyle-oriented work that uses the functionality of Hinoki cypress to meet the need for delicious hot rice in these days of long hours at home. The design of the tableware is also excellent, taking advantage of the wooden Masu manufacturing technology, and it is convenient to heat the rice and serve it directly to the table. We highly evaluated this product as an item that decorates a rich dining table with wood.

ENCOURAGEMENT AWARD (Review Committee Chair Award)

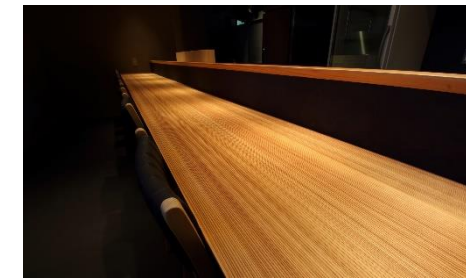


Lifestyle Design Category: Building Material

「Asanoha Chirashi」 series

Tanihata Co.,Ltd(Toyama)

The theme of Kumiko is Japanese beauty and nature as seen in four seasons. The large cross section of Kumiko work crafted using the traditional techniques of master craftsmen is beautiful. The 18 variations in design broaden the range of spatial design. The expression of Japanese culture and technique, which can be exported overseas, is outstanding.



Lifestyle Design Category: Building Material

Cryptomeria (Counter)

Kyumeikyō Co.,Ltd (Fukuoka)

This is a material with a vertical grain width-grafted and polished finish (uzukuri). This is a simple but functional proposal that combines durability and design by taking advantage of the design of the uzukuri process. The increased hardness is expected to expand the use of cedar wood, and it is likely to be in demand for counters in restaurants and offices.



Lifestyle Design Category: Architecture & Space

patol stool (Domestic wood series)

Hirayama Nichiyuhinten (Kyoto)

It is a folding stool using "string hinges". It is a simple but functional piece that meets the needs of the times for outdoor activities and camping. The combination of leather cord and wood makes it flat when folded, and its light weight makes it easy to carry.



Heartful Design Category: Communication Segment

2020 Osaka City Central Library

Basement Partial layout renovation of the left reading room on the 1st floor
Osaka Forestry Association (Osaka), graf Decorative Mode Number Three (Osaka), Hida Sangyo Co.,Ltd (Gifu)

The interior space of the Osaka Municipal Central Library was converted into a wooden space. The forestry cooperative, wood processing company, and design company collaborated in this activity, which combined the design of the woody reading room with a workshop to promote the use of wood. This is a good example of "how to use local forests" through the use of the forest environment concession tax.



Social Design Category: Architecture & Space Segment

MELDIA RESEARCH INSTITUTE FOR ADVANCED WOOD(Fukuoka)

Fukuda Laboratory, Department of Architectural Design, Faculty of International Environmental Engineering, The University of Kitakyushu (Fukuoka), Sanei Architecture Planning Co., Ltd(Tokyo), Geocluster Co.,Ltd (Fukuoka)

This is an ambitious attempt to show a bold use of thin CLT in terms of both environmental performance and design. The use of exposed wood for walls and ceilings avoids the inorganic feel of the space, which is common in research facilities, and is also highly regarded for its enhanced livability.



Social Design Category: Communication Segment

Kuwamizu Public Bathhouse(Kumamoto)

WORKVISIONS Inc. (Tokyo), Kuroiwa Structural Design Engineers Co.,Ltd (Kumamoto), Takemi Yuto Architects (Tokyo)

The public bathhouse on the first floor is both a home bath and a bathhouse open to the community. It is a unique initiative to open the baths of private homes to the community from the perspective of disaster recovery. The bathhouse plays the role of an exchange space where people can communicate with each other by soaking in the hot water of Aso in a space surrounded by wood.



Heartful Design Category: Architecture & Space Segment

The Royal Park Canvas Sapporo Odori Park (Hokkaido)

Mitsubishi Jisyo Co.,Ltd (Tokyo), Mitsubishi Jisho Sekkei Co.,Ltd (Tokyo), MEC Industry Co.,Ltd (Kagoshima), Royal Park Hotels and Resorts Co.,Ltd (Tokyo)

This hotel was built in close proximity to the Sapporo TV Tower, a symbol of central Sapporo. It is a good example of wood design for a hotel that provides guests with a relaxing time by actively utilizing Hokkaido timber, such as Todo fir for flooring and Japanese Ash for exterior louvers, and utilizing new technology to create a space with a woody feel. The hotel takes advantage of the benefits of wood, such as reducing the weight of the building by making the upper three floors wooden.

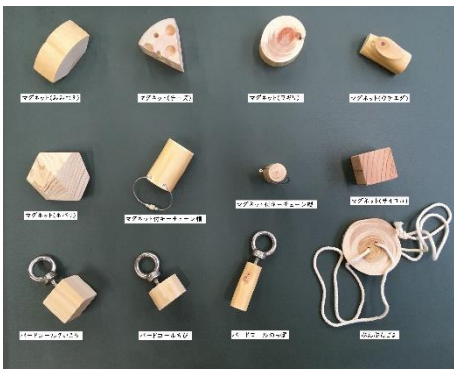


Heartful Design Category: Architecture & Space Segment

KAKAMIGAHARA PARK BRIDGE(Gifu)

Kakamigahara Manabi-no-Mori Co.,Ltd (Gifu Prefecture), Inoue Komuten Co.,Ltd (Gifu Prefecture), Hida Goboku Co.,Ltd (Gifu), TAB Co.,Ltd (Gifu)

This is an all-weather indoor facility for children created through the Park-PFI system. The wooden playground equipment, which allows children to play freely and safely, is integrated with the architecture to create an open space full of wooden charm that is also compatible with the surrounding urban park. It is a high-quality wooden facility that enhances children's sensitivity and involves their physicality. The design is good to make children want to be physically active even in cold or rainy weather.



Heartful Design Category: Communication Segment

The Woodman's Capsule Toy

Tokyo Chainsaws Co.,Ltd (Tokyo)

It is a toy vending machine that contains miscellaneous goods made from unused parts of trees harvested in the mountains of Hinohara Village, Tokyo. Although there are many wooden goods as souvenirs, they do not sell well on their own. The unique approach of producing and selling wooden products, inspired by the toy "gacha-gacha" (capsule toy), is very good, and there is the fun of not knowing what you will get. The toy machines have already been installed in more than 30 locations in the Tama area and elsewhere, and we commended this new attempt to return profits to the mountainous area.

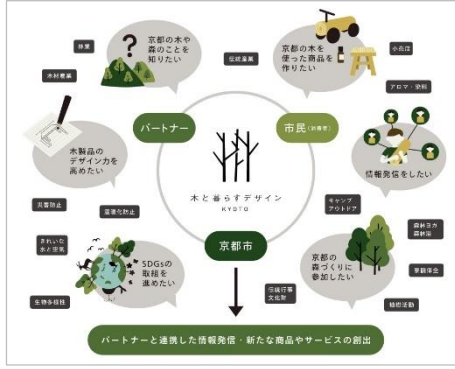


Social Design Category: Communication Segment

Hamamatsu Cuisine GOZARO

Dolphin Kids Production Co.,Ltd (Shizuoka), Shima Design Office Co. (Shizuoka), Suzuzo Zaimokuten Co.,Ltd (Shizuoka), Ishimaki Architects (Shizuoka)

This restaurant in Hamamatsu City, Shizuoka Prefecture, serves food made with local ingredients. It is a good example of the use of local resources in the form of food and wood, the promotion of local attractions, and the development of wood design through the collaboration of local businesses. The high quality of the spatial design, including the effective use of large-diameter trees, is also commendable. This proposal can be considered a symbolic model for increasing efficiency and adding value through collaboration between downstream and upstream entities in the utilization of local timber.

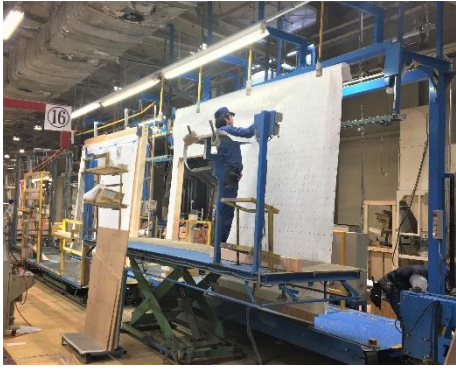


Social Design Category: Architecture & Space Segment

Design for Living with Wood KYOTO

Kyoto City (Kyoto), Sanowataru Design Office (Kyoto)

The project transcended the framework of the forestry and timber industries to create a platform that connects a wide range of companies, universities, and other organizations in preparation for the SDGs era. The project was highly evaluated as a business model development proposal by the local government, which built a platform for designing and communicating ways to use wood that match modern lifestyles, based on the three missions of "connect," "use," and "pass on." Collaborating with a wide variety of businesses and designers, the project has produced high quality output.



Social Design Category: Architecture & Space Segment

Streamlining Technologies for Manufacturing, Distribution, and Construction with Large Wooden Panels

Wood Station (Chiba), Large Panel Production Partners Association (Chiba)

This is a new business model that integrates information processing, factory production, and on-site production in order to improve production efficiency of large wooden panels, which vary from property to property. This is a socially beneficial initiative to promote wood construction, as it enables the production and installation of large panels using local timber and reduces the workload on site by reducing the labor required for installation.



Lifestyle Design Category: Wood Products Segment

BAUM

Shiseido Co.,Ltd (Tokyo), KARIMOKU FURNITURE INC. (Aichi)

All the products are developed based on the philosophy of "Coexisting with Trees". The trend toward natural and sustainable materials is further increasing, wood-based cosmetic packages are expected to expand in the future. The packaging is well designed and wooden-parts can be used repeatedly.



Lifestyle Design Category: Wood Products Segment

TANZAKU Lamp

Storio corp. (Niigata)

It is a rechargeable lamp bent from solid beech wood. The unique design created by the grain and curves of the wood will look even more beautiful when served with food. The rechargeable lamp is also good for keeping the surrounding area neat and tidy in the living room.

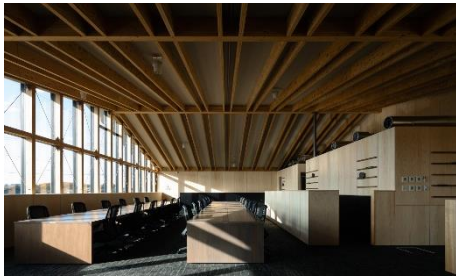


Heartful Design Category: Architecture & Space Segment

Katsuyama Branch, Tsuyama Shinkin Bank (Okayama)

Tsuyama Shinkin Bank (Okayama), ofa Co.,Ltd (Hyogo), Sanwa Construction Co.,Ltd (Okayama), Torisha Co.,Ltd (Osaka), Ai Sekkei Co.,Ltd (Tokyo), Meiken Lamwood Co.,Ltd (Okayama)

This is the construction of a new branch of a credit union that appeals to the use of wood in the community. The gentleness of the wood and the visible interior design bring an affinity to the community. It is unique as a financial institution facility open to the community that is compact and can be easily accessed as if it were home.



Heartful Design Category: Architecture & Space Segment

Tsukuba Branch, ISG Corporation(Ibaraki)

ISG Corporation (Chiba), Tomoyasu Kawakubo Architects (Tokyo), DAISHU Co. (Chiba)

This is a new branch office project for an energy company. While ensuring the company's role in the community as a company dealing with energy, the wonderful woody feel of the building is skillfully designed to provide a relaxed atmosphere for workers and visitors. The pillarless space with LVL framing, used as office space, is open and comfortable.



Heartful Design Category: Architecture & Space Segment

AGRI CARE GARDEN Kasumigaura

Satoyama Kenchiku Kenkyujo Co. (Ibaraki), AGRI CARE Co. (Ibaraki), Medical Corporation AGRIE (Ibaraki), Sankyo Construction (Ibaraki), Osaki Zaimokuten (Ibaraki), Ditech (Fukushima)

This welfare facility includes a 48-room private-pay nursing home, a 19-bed clinic, and rehabilitation and day care services. The spatial design is favorable in that it takes full advantage of the wood's humidity control, heat retention, fragrance, and safety features as necessary for the facility. The facility is in harmony with the surrounding natural environment as well as taking into consideration the health of the elderly and the disabled.



Heartful Design Category: Architecture & Space Segment

Yokkaichi Central Green Space Sports Facility (Mie)

Kume Sekkei (Tokyo), Yokkaichi City (Mie), Taisei Construction (Tokyo), Nakamura Corporation (Mie), Shelter Corporation (Yamagata)6.5

This is a redevelopment plan for the entire park area. The forum, with its impressive wooden lattice, brings in outside light and gives the impression of walking through a nearby forest. While fulfilling the flow lines and functions of a sports facility, the use of wood creates an environment filled with hospitality.



Social Design Category: Architecture & Space Segment

cup of tea ensemble (Gifu)

cup of tea ensemble Co.,Ltd (Gifu), KRAFT ARCHITECTS Co.,Ltd (Tokyo), H inc. (Tokyo), Hida Sangyo Co.,Ltd (Gifu), Tanaka Corporation (Gifu), Kaki BUSHI (Gifu)

A small inn with a total of 8 rooms. The beautifully designed wooden accommodation blends in well with the local landscape, but at the same time it also has a sense of novelty. Based on the concept of using a variety of tree species, the inn was created with a focus on design, and will be a space that will deepen the impression of your trip.



Social Design Category: Communication Segment

Wood Action 2021

Tsum Tsum Championship

Japan Forest Biomass Network (Miyagi)

It is a game to think about trees, forests, and the environment while having fun. It is a simple game of piling up pieces of wood, but it is a high-quality activity that shows how people enjoy playing with wood in an easy-to-understand way. The one-minute time limit increases concentration, and even adults will be absorbed in the game.



Social Design Category: Communication Segment

morinos connects all people to the forest

Gifu Academy of Forest Science and Culture (Gifu)

It is comprehensive center offering forest experiences from various directions, including forestry, forest education, music, and community activities. We hope that learning about and feeling the forest will create opportunities for people to incorporate forests and timber into their daily lives. The self-build program offered here aims to provide opportunities for people who participate in placemaking to utilize forests and timber in their homes, schools, and workplaces.